

Multi-user trail design for Aberdeen Property

A Presentation By



LCEA | Loudoun County Equine Alliance



LCEA's Mission and Goals



"The **mission** of the Loudoun County Equine Alliance is to present a unified voice to actively advocate, educate and communicate the goals, initiatives and benefits of the horse industry, in order to advance the interests of all equine disciplines and the entire equestrian related industry."



*LCEA's **goals** are to quantify* the impact of the equine economy in Loudoun County and ascertain the assets and needs to the horse industry on an ongoing basis.

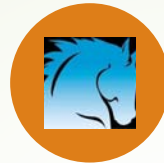
***Promote* the maintenance and expansion of existing facilities and trails and the development of new facilities and trails.**

Promote and protect new and existing program of land conservation for equine activities.

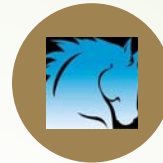
Promote the attraction, retention and expansion of equine related businesses in Loudoun County.

Equine Industry in Loudoun

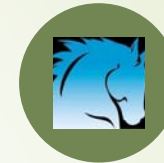
(2015 survey by Weldon Cooper for Department of economic Development)



GENERATES OVER
\$180 MILLION
DOLLARS ANNUALLY



LOUDOUN IS HOME
TO MORE THAN 14,000
HORSES



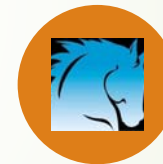
WITH AN ESTIMATED
VALUE OF OVER
\$13,000/HORSE



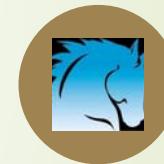
AND A TOTAL VALUE
OF ALL HORSES
GREATER THAN \$190
MILLION



EQUINE OWNERSHIP
CREATES MORE THAN
2700 LOCAL JOBS

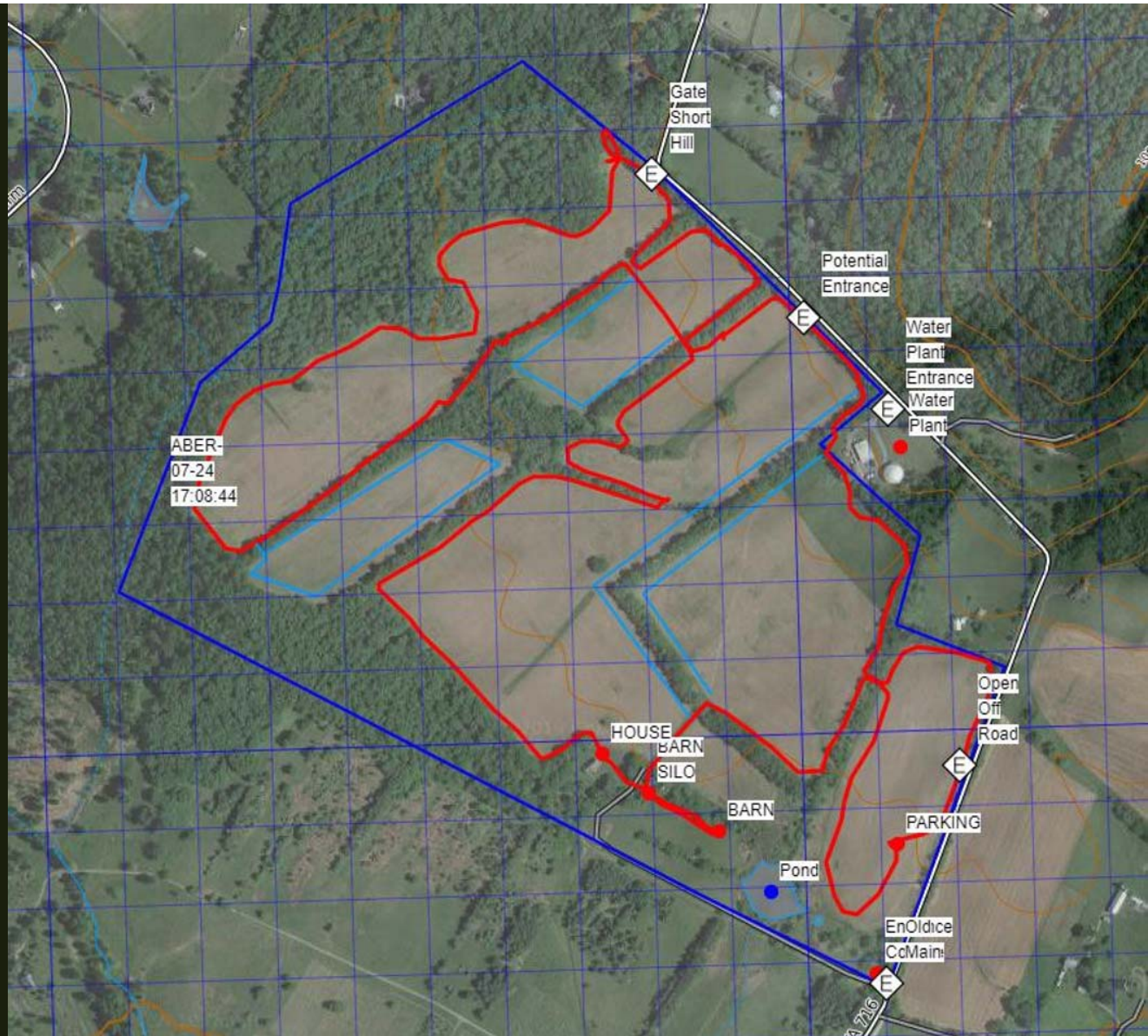


TOTAL AMOUNT SPENT
ON EQUINE ACTIVITIES
EXCEEDS \$600,000



MOST OF THE EQUINE
ACTIVITY AND
OWNERSHIP TAKES
PLACE IN WESTERN
LOUDOUN

Potential Multi-user Trail at Aberdeen



Benefits to The Town of Purcellville


Trail design does not interfere with potential future plans for the property

Trail can be added to or modified as Town sees fit

Trail builds goodwill and community interest in the property

Potential to grow a community of user groups to develop a larger park

Potential linkage to a larger county wide multi-user trail system



MOU
between
LCEA and
the Town of
Purcellville



LCEA will build the trails and provide trail signage



LCEA will maintain any woodland trails on an as-needed basis



The town will continue to mow the fields or the perimeter of the fields to maintain a trail and parking area (approximately 2 times a year during growing season)



The town will provide a kiosk with signage for the trail at the parking site



Town will modify the gate at the parking field so trailers can have safe ingress and egress onto Short Hill Road



QUESTIONS?

